

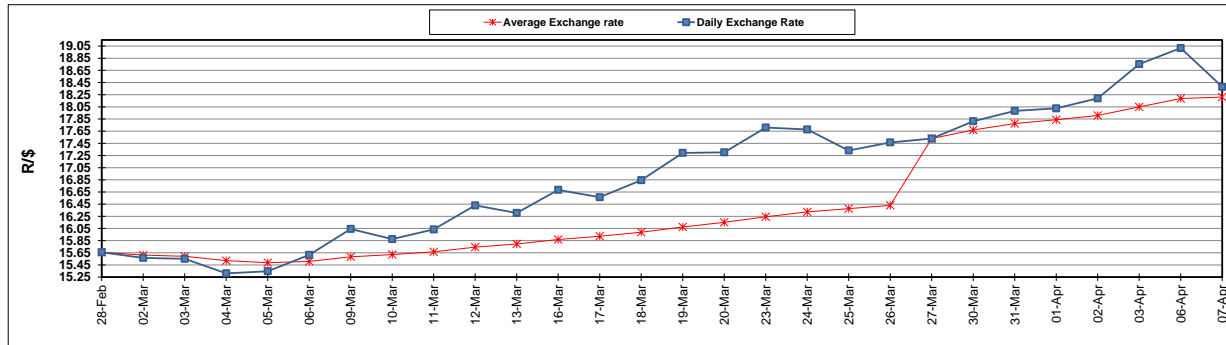
	PETROL 95 ULP	PETROL 93 ULP & LRP	DIESEL 0.05%	DIESEL 0.005%	ILL. PAR.
GAUTENG PUMP PRICE (SA c/l) AS FROM 01/04/2020	1,396.000	1,376.000	-	-	-
WHOLESALE PRICE (SA c/l) AS FROM 01/04/2020	-	-	1,269.560	1,273.960	672.828
SINGLE NATIONAL MAXIMUM RETAIL PRICE	-	-	-	-	840.000
BASIC FUEL PRICE - 07/04/2020 (SA c/l)	336.557	332.773	456.733	468.103	332.677
PRESS RELEASE CONTRIBUTION TO BFP 01/04/2020 - 07/04/2020 (SA c/l)	448.770	438.770	518.630	523.030	468.128
UNIT OVER/(UNDER) RECOVERY - 07/04/2020 (SA c/l)	112.213	105.997	61.897	54.927	135.451
AVERAGE BASIC FUEL PRICE 27/03/2020 - 07/04/2020	316.881	311.700	452.576	459.980	335.866
AVERAGE UNIT OVER/(UNDER) RECOVERY 27/03/2020 - 07/04/2020	214.089	204.770	127.929	125.300	206.512

ANALYSIS MOVEMENT OF AVERAGE OVER/(UNDER) RECOVERY

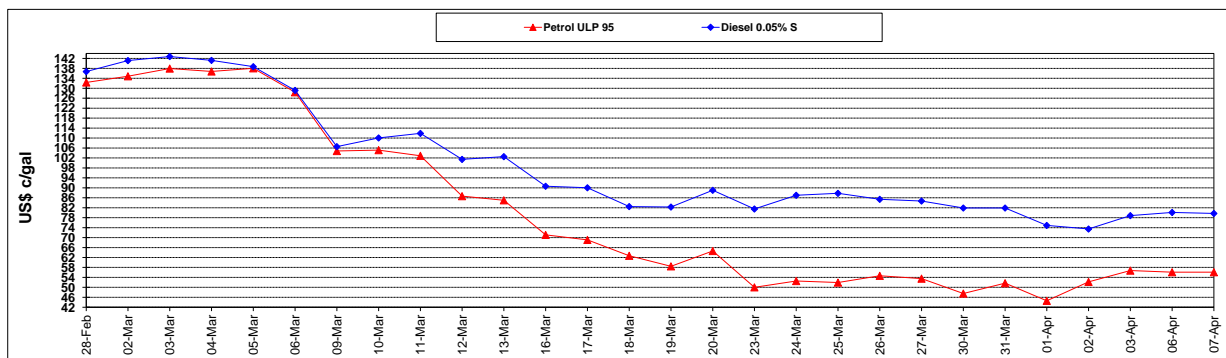
	PETROL 95	PETROL 93	DIESEL 0.05%	DIESEL 0.005%	ILL. PAR.
- MOVEMENT IN INTERNATIONAL PRODUCT PRICES	245.077	235.251	172.187	170.282	239.356
- MOVEMENT IN EXCHANGE RATE	(30.988)	(30.481)	(44.258)	(44.982)	(32.844)
AVERAGE UNIT OVER/(UNDER) RECOVERY 27/03/2020 - 07/04/2020	214.089	204.770	127.929	125.300	206.512

R/\$ EXCHANGE RATE - (R/\$18.3798 - 07/04/2020)

EXCHANGE RATE USED IN BASIC FUEL PRICE



INTERNATIONAL PRODUCT PRICES OF BASKET USED IN BASIC FUEL PRICE



BASIC FUEL PRICE IN SA CENTS PER LITRE

